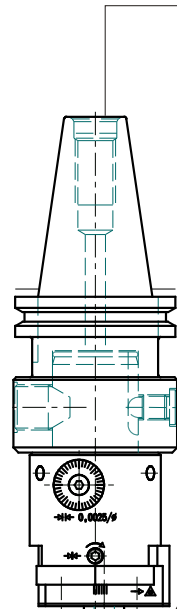


205bh

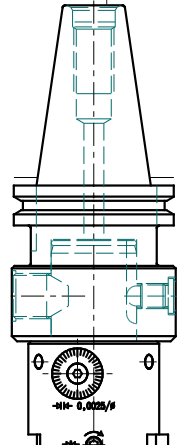
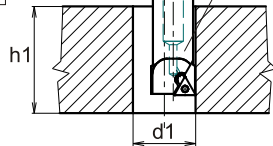
NAREX[®]MTE

code	VK MSK AD34
209.227	ISO 40 DIN 69871AD
209.234	ISO 50 DIN 69871AD
209.241	ISO 40 DIN 2080
209.258	ISO 50 DIN 2080
209.265	MAS-BT 40
209.272	MAS-BT 50
209.289	CAT 40
209.269	CAT 50



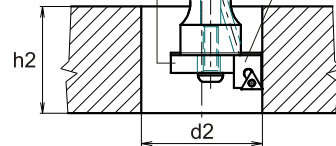
BORING TOOL
VYVRTÁVACÍ NŮŽ
WENDEPLATTENHALTER

C
D
E

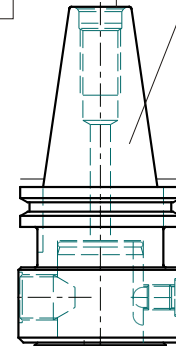


HOLDER BAR
DRŽÁK HLAVICE
HALTERSTANGE

F
G

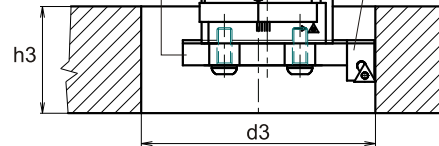


INSERT HOLDER
HLAVICE-NOŽOVÁ JEDNOTKA
WENDEPLATTENHALTER



TAPER SHANK MSK AD34
UPÍNACÍ KUŽEL MSK AD34
KEGELSCHÄFTE MSK AD34

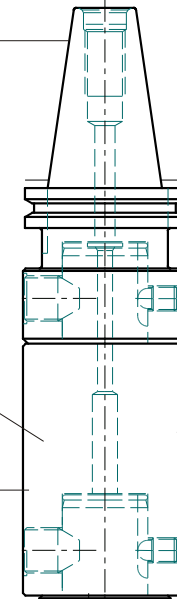
M
N



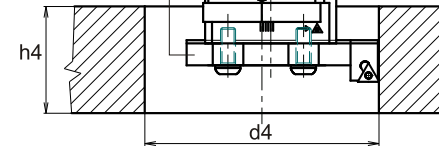
INSERT HOLDER
HLAVICE-NOŽOVÁ JEDNOTKA
WENDEPLATTENHALTER

EXTENSION ELEMENTS
PRODLUŽOVACÍ ČLEN
VERLÄNGERUNG

MSK AD 34/34-50
MSK AD 34/34-100
MSK AD 34/34-150



M
N



značení-marking	code	d1 max	h1 max
VPS16-062-FCRK10 (C)	203.201	14 mm	29 mm
DDA16-073STFPR08 (D)	203.294	18 mm	49 mm
DDA16-083STFPR08 (E)	203.300	26 mm	62 mm

značení-marking	code	d3 max	h3 max
DVS60-080STFPR08-2.0 (M)	203.775	80 mm	75 mm
DVS80-100STFPR08-2.0 (N)	203.782	100 mm	75 mm

značení-marking	code	h2 max	značení-marking	code	d2 max
VTA16-50-1.5 (F)	203.270	50 mm	VHA16-1.5STFPR08 (L)	203.768	40 mm
VTA16-80-1.5 (G)	203.287	80 mm	VHA16-1.5STFPR08 (K)	203.751	60 mm

značení-marking	code	h4 max	značení-marking	code	d4 max
MSK AD 34/34-50	210.056	125 mm	DVS60-080STFPR08-2.0 (M)	203.775	80 mm
MSK AD 34/34-100	210.063	175 mm	DVS80-100STFPR08-2.0 (N)	203.782	100 mm
MSK AD 34/34-150	210.070	225 mm			

BASIC MACHINING OPERATIONS CARRIED OUT BY THE BORING HEADS 205bh
ZÁKLADNÍ STROJNÍ OPERACE PROVÁDĚNÉ POMOCÍ 205bh
ELEMENTARE ARBEITSGÄNGE, DIE MITTELS 205bh REALISIERBAR SIND
OPERACIONES BÁSICAS MECÁNICAS REALIZADAS CON 205bh
ОСНОВНЫЕ СТАНОЧНЫЕ ОПЕРАЦИИ ВЫПОЛНЕННЫЕ ГОЛОВКАМИ 205bh